

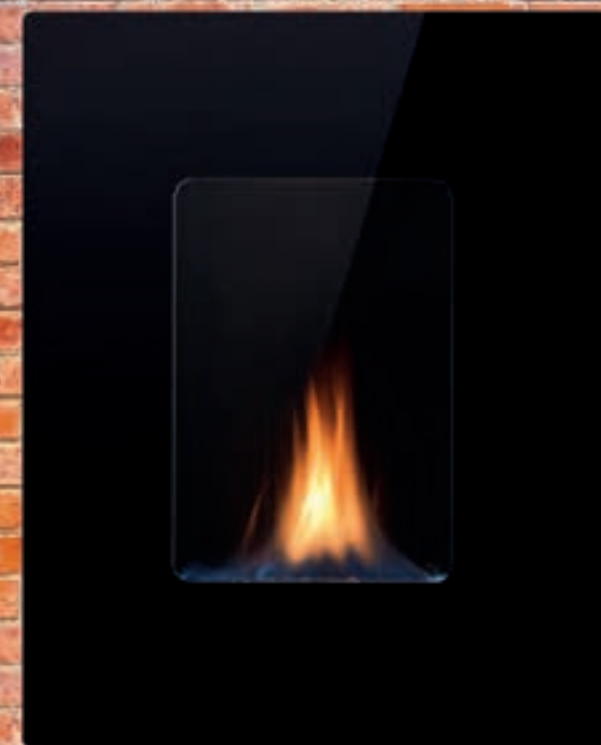


## Heating the world since 1854

Mastering the art of heating efficiency since 1854, our fires and stoves have been warming homes around the world for over 160 years.

More than simply a beautiful wall mounted flame. Firewall® is designed by true stove craftspeople, creating fires with genuine warmth.

Comfortable. Approachable. Quiet.



ESSE

39" black glass portrait

ESSE

## Specifications & fitting

Firewall® brings style and performance. While some wall fires trap much of the heat behind a thick glass sheet, forcing it upwards, Firewall's stunning glass front features a cut-out section that lets the heat circulate freely.

### Flueless flexibility

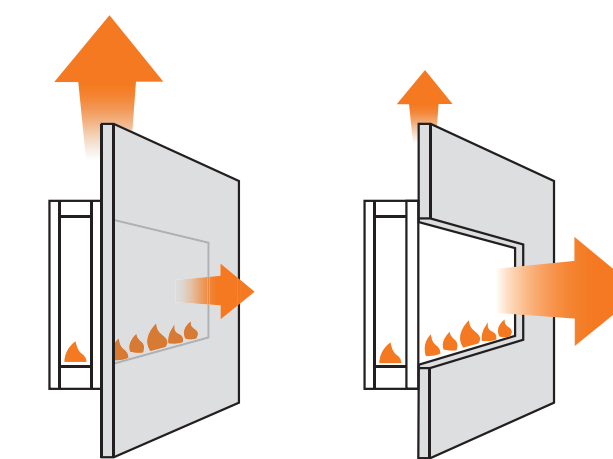
Firewall® can be mounted anywhere, without the need for a flue or chimney; even on combustible surfaces such as timber or plasterboard portioning. The gas supply can also be fitted in the wall cavity, making installation almost as simple as hanging a picture.

### Energy efficient

Ranging from 2.4kW (39") to 2.6kW (41" and 50") and 3.5kW per hour (48" and 60") maximum heat output, Firewall® is powerful and 100% efficient. Zero energy is lost up a chimney like conventional flue gas fires, meaning all the heat goes into warming your room, keeping running costs low.

### Safety features

With catalytic converter technology Firewall® 'scrubs clean' burnt gas emissions. Reassuringly, a built-in oxygen depletion sensor shuts off the gas supply and burner if oxygen in the room falls below safe levels.



Inefficient glass front design

Firewall® glass front design

### Placement & installation

You can place your Firewall® on any flat, non-recessed wall, taking height restrictions into account from both floor and ceiling. The gas supply must be sleeved through the wall, while a 100cm<sup>2</sup> air vent is also required. Legally, you are obliged to fit a carbon monoxide detector.

Each model is available in natural gas and LPG. For your own safety and to protect the warranty, your Firewall® must be fitted by a Gas Safe registered engineer. Each model is designed with an easy fit template on the reverse.

Please read the installation manual for full positioning instructions.

### Ventilation & room size

Firewalls must be fitted in a room no smaller than 30m<sup>3</sup> (portrait 39", landscape 41" and 48") and 40m<sup>3</sup> (wide screen 50" and 60"). The room must have an openable window and built-in ventilation at least 100m<sup>2</sup>.

Firewall® is a secondary heating appliance and as such must be used in conjunction with central heating.

**ESSE Engineering Limited**  
Long Ing  
Barnoldswick  
Lancashire  
BB18 6BJ

**T:** +44 (0)1282 813235  
**E:** [enquiries@esse.com](mailto:enquiries@esse.com)  
**W:** [esse.com](http://esse.com)

Follow us: @ESSE1854  
[youtube.com/esse1854](https://www.youtube.com/esse1854)

ESSE



Firewall®

Create a warmer home ...instantly

41" black glass landscape

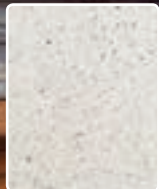
ESSE





## All of the heat. All of the style.

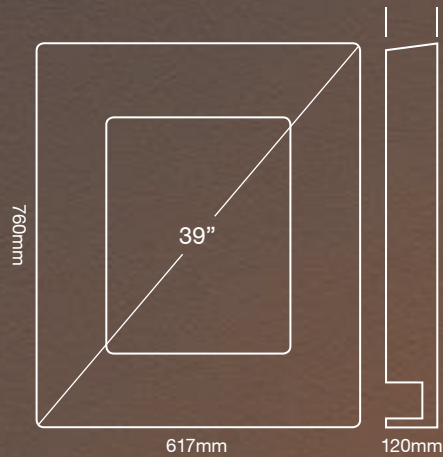
Feel warmer, faster, all year round. Firewall® is the ultimate in flueless gas fire technology, giving you all of the heat, instantly, while losing none of the style. The only one of its kind with a single layer of ceramic glass covering the firebox, Firewall® is extremely efficient, displacing all of its heat into the room, without any going to waste. All so you can enjoy a more comfortable home, with less gas and lower running costs.



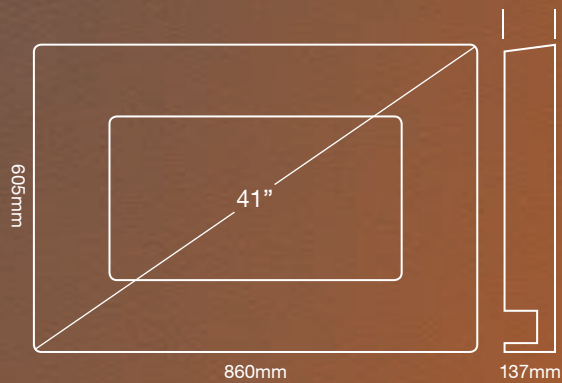
39" smooth stone portrait

## Beautiful from every angle

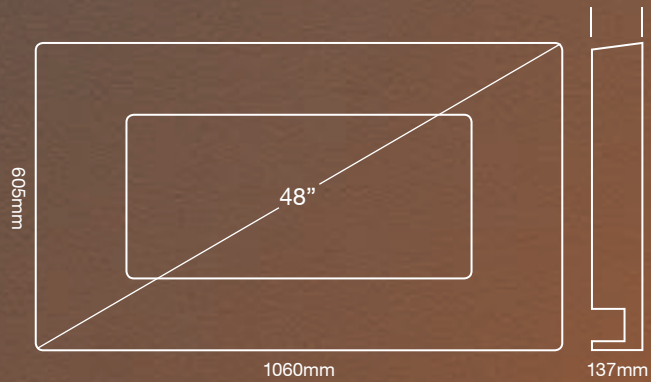
Firewall® is the slim, silent gas fire you can hang throughout your home without the need for a chimney or flue. Stunning in black glass, smooth stone or line stone finish, Firewall® comes in 39" portrait, 41" and 48" landscape and 50" and 60" wide screen.



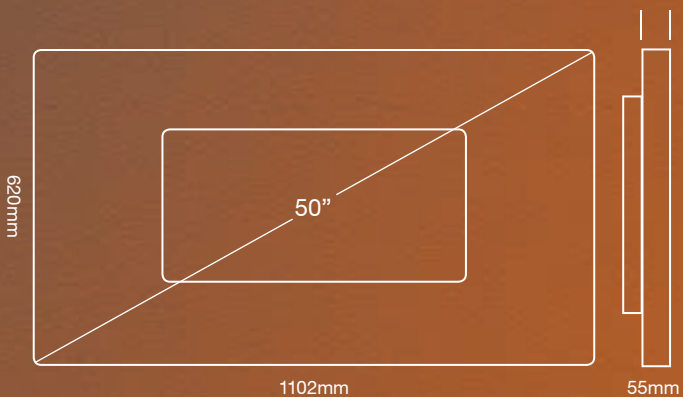
39" portrait - black glass, smooth stone



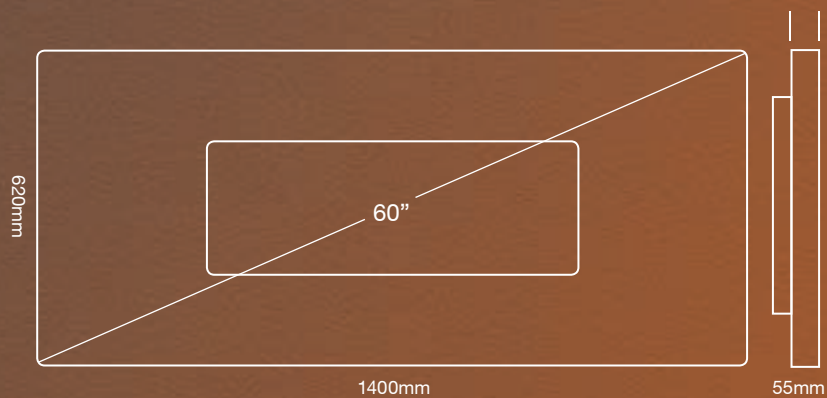
41" landscape - black glass



48" landscape - black glass



50" wide screen - smooth stone, line stone



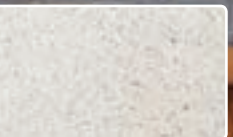
60" wide screen - smooth stone, line stone

See reverse for specifications and fitting.

## Effortless control



Firewall® is our most innovative technology yet. Firewall® models can also be supplied with a neat remote control. A Firewall® with remote control allows you to turn on the fire from anywhere in the room and turn it up, down and off as you desire. A remote control removes the need for manual ignition and the need for a standing pilot light. We regret that it is not possible to retro fit a remote control to a manual Firewall®.



60" smooth stone wide screen

## Born and bred in the UK

Staying true to our heritage means building and testing every ESSE fire in our UK factory. It also means we only ever sell through independents we trust to give you the best advice.



50" line stone wide screen

ESSE